

# Lectures

## COMMENT

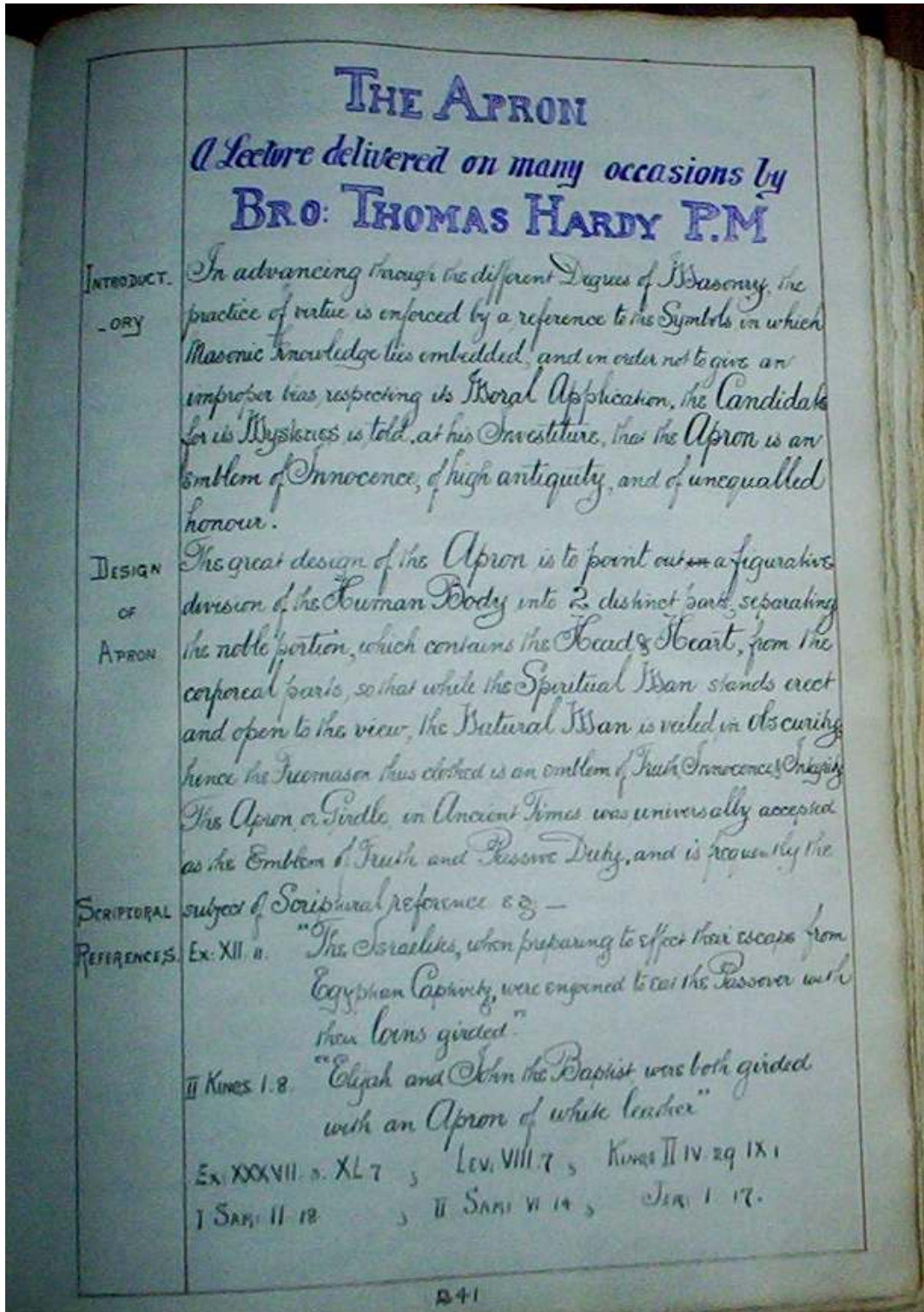
Two short lectures:-

### THE APRON

A Lecture delivered on many occasions by Bro Thomas Hardy, PM.

### THE MASTER'S GAVEL

The Worshipful Master's Gavel or Mallet presented at his Installation when he is informed "that it constitutes the essential element of his Authority..."



ANTIQUITY  
OF APRON

All Ancient Statues of the Creation Gods, discovered in Egypt, Persia  
or Hindustan, are uniformly decorated with superb Aprons.  
Hence is deduced the Antiquity of the Apron.

It is further declared to be more honourable, &c.

In ancient times the Apron was a Badge of Distinction, Among the Jews  
none but the superior orders of Priesthood were permitted to adorn themselves with  
ornamented Sashes, made of Blue, Purple, & Crimson, decorated with Gold upon a  
ground of fine white linen, while the inferior Priest wore only plain white.

Though the principal honour of the Apron consists in its reference to Purity  
& Innocency, yet it certainly appears, in all Ages, to have been a most  
Badge of distinction. In primitive times it was rather an Ecclesiastical

THE ROYAL  
STANDARD  
OF PERSIA

than a Civil decoration, although it has been elevated as a National badge  
e.g. - The Royal Standard of Persia was originally an Apron in  
form and dimensions.

It cannot be expected that every Mason should be perfectly  
versed in all the Mysteries of the Science, but it is imperatively  
required of everyone to practise the great and prominent virtues  
of Faith, Hope & Charity, Temperance, Fortitude, Prudence & Justice.  
Our Faith and Hope must be perfected by Charity, or all  
our attainments will be as nothing.

We may speak with the Tongues of Men and of Angels,  
we may have all Wisdom and Knowledge, but if  
our Masonry, though founded on Faith and Hope, be  
not animated by Charity, it is only a worthless  
Skeleton, adding not to our moral reputation.

## The Worshipful Master's Gavel.

THE  
W. M.'S  
GAVEL.

Perhaps no Lodge appliance or Symbol possesses so absorbing an interest as the W. M.'s Gavel or Mallet, in its antiquity. At his Installation the W. M. is informed, that it constitutes the essential element of his Authority, without which his efforts to preserve Order must be ineffectual, that it is an Emblem of Power, and the governing instrument of his Office. It is derived from *Gabellum*, a gift or presentation used in the Transfer of Possession from hand to hand.

MYTHOLOGY

Its origin, according to Mythology, is thus explained:-

Loke, a Norse deity, made a wager with a Dwarf that he could not forge certain things which would compare with the mechanical skill of the Dwarf. Certain Conditions were agreed upon, and after a time, he took from the fire, among other articles, a Hammer, named *Niölnir*, the Crusher, or Crusher. These were produced before the three principal Gods of Asgard, abodes of the Norse divinities, -

Oden, Thor, and Frey.

who were selected Arbiters of their respective values.

VIRTUES  
OF THE  
HAMMER.

After careful test, it was unanimously decided that the Hammer was Superior to all. This implement possessed the virtues of striking with unerring certainty any Object at which it was thrown, and however severe a blow was struck, no injury ensued to the person wielding the Hammer."

Thus it is with the W. M. of a Lodge, grasping his Gavel, he is immediately clothed with the Symbol of Power, being typical of absolutism & Authority, and crowning the Lodge, like as in a medieval Court of Justice, by a blow indicating that he has returned, by his Gavel

his Lodge to order and submission.

AN EMBLEM  
OF  
POWER.

As an Emblem of extraordinary power, the Mallet has preserved its typical character during successive Ages, and as such has come down to the present time. In the Middle Ages this instrument was a Religious Symbol, and made use of to establish propriety rights over Land & Water. It was accomplished by throwing the Mallet at full swing, and all the ground traversed was acknowledged reduced to the person's possession casting the same. In the 15<sup>th</sup> Century, this custom was practised by the Masonic Fraternity, and symbolized proprietorship. In very early ages, the Hammer was used as a Signal by which Gothic Courts were convened.

A RE-ECHO  
OF  
THE PAST.

The Gavel thus directly alludes to this usage, and when it sounds the decision of a question submitted, that blow is merely the re-echo of a power current many Centuries ago, in the Administration of Justice.